

BUILDING
COMMON GROUND

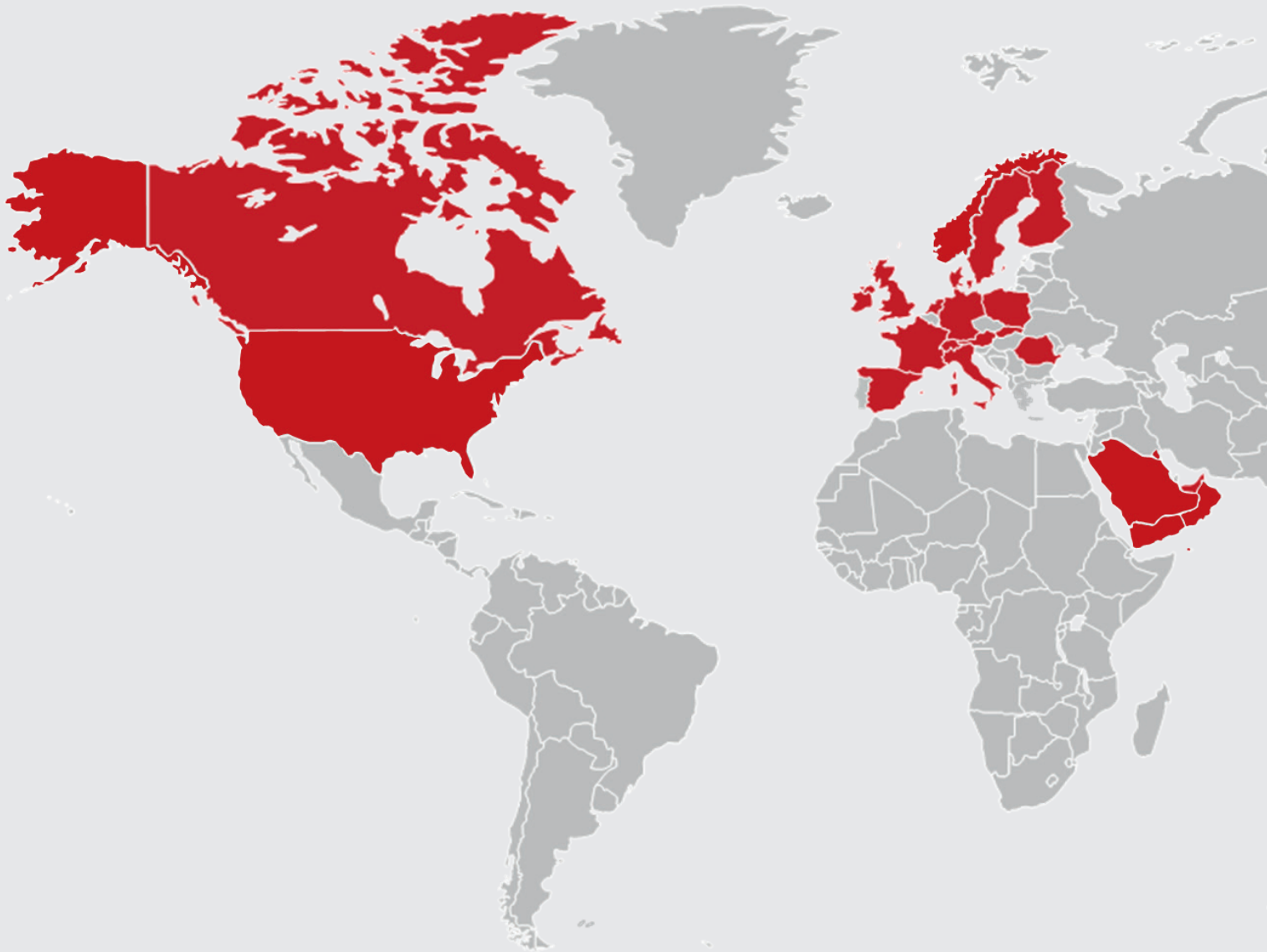


Pecafil®

Permanent formwork for ground
beams and pile caps

MAX FRANK

60 Years of Building Common Ground



- **International group**
- **We develop, produce & supply high-quality solutions**
- **Family-run since 1962**

BUILDING
COMMON GROUND



Pecafil®

Permanent formwork for ground beams and pile caps

Contents

40 years of Pecafil®:

The original permanent formwork	5
The Pecafil® system	6
Why Pecafil®?	8
Just look at its uses	9
Pecafil®: the benefits	10
Pecafil® sizes & dimensions	11
MAX FRANK detailing service	12
We're here to help	13
MAX FRANK Group	14



MAX FRANK

BUILDING
COMMON GROUND

40 years of Pecafil®



Pecafil®

The original permanent formwork

Developed in the early 80's by the MAX FRANK Group, Pecafil was patented in 1982 and has been developed into a complete permanent formwork system that primarily speeds up construction, improves build quality and reduces the need for skilled labor on site.

The Pecafil 'yellow' is instantly recognizable and today is a prominent feature on most construction sites as the formwork system preferred by leading groundworks contractors.

Pecafil has been tried and tested on site for over 40 years and behind this track record of success is a program of continuous product development to ensure that Pecafil is easy to use and provides a totally reliable permanent formwork system.

MAX FRANK do not simply use standard 'off the shelf' mesh sheets but specially manufacture the steel mesh in their own world-class production center to an exacting specification. This has been subject to continuous product development so that the current mesh wire diameters and Pecafil centers provide the optimum in core panel strength, whilst maintaining an overall panel weight that makes Pecafil easy to handle on site.

Pecafil panels are centrally manufactured in a dedicated modern 550,000ft² factory where a purpose designed in-line manufacturing facility automatically converts coils of steel wire into the specially manufactured mesh and then a continuous process automatically encapsulates it within two layers of distinctive yellow foil membrane.

- Tried and tested for over 40 years
- Reliable permanent formwork system
- Integrated manufacturing process from wire coil to finished sheet
- Optimum strength/minimum weight
- Sealed edge panels withstand any concrete pressure
- Strong, durable, resilient and UV stabilized barrier



The Pecafil® system

MAX FRANK Pecafil is produced in various sheet and strip sizes, with wire diameters and mesh centers to suit the specific application. MAX FRANK provides a further important service - processing and forming Pecafil sheets to create a wide range of standard and bespoke panels to suit specific customer applications.

Pecafil components can be delivered to site already pre-shaped and sized to meet customer's needs and may be simply installed with a minimum of basic tools. This process significantly reduces on site waste and makes installation of Pecafil both fast and easy, saving contractors substantial time and money.

Pecafil is an environmentally friendly product, has no impact on groundwater and is recyclable. The high-grade polyethylene foil membrane, a non-toxic material made from naturally occurring hydrocarbons, is heat-shrunk on to the mesh, creating a sealed panel that can withstand any concrete pressure. The membrane is highly resistant to physical damage and is UV stabilized for 6 months' exposure to provide a strong, durable and resilient barrier.

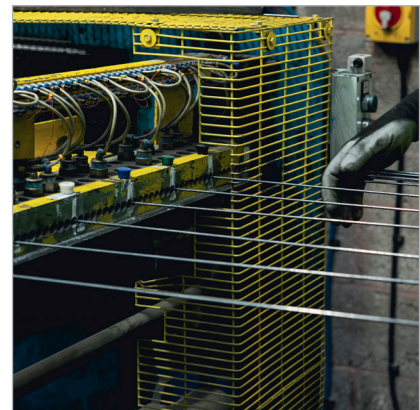
- wide range of sizes
 - prefabricated units
 - bespoke panels
 - fast and easy installation
 - environmentally friendly
-



MAX FRANK provide a delivery service to according to site requirements and, to support this, a substantial stock of Pecafil sheets and strips are held in stock ready for processing or forming to your site requirements.

MAX FRANK is an established worldwide organization - and now has a presence in North America.

All deliveries are made direct to site with a detailed schedule of the units being delivered and a Pecafil assembly guide for easy installation. All units are clearly marked so they may be quickly identified and used on site.



MAX FRANK Pecafil®
Tried, Tested, Trusted.



Why Pecafil®?

The Concept

When you use a product each day it is easy to overlook its inherent benefits and all too easy to forget the breadth of advantages it confers in use.

Pecafil is a proven, reliable and complete formwork system comprising a wide range of sheet sizes and specifications designed to give the flexibility that allows the optimum solution to be provided for any project. Pecafil is available factory formed to customized shapes with sealed edges to provide for fast and accurate formwork installation. It is simple to identify, select and install ready formed Pecafil units to form pile caps, bases and beams.

Individual panels are light enough to handle onsite without the need for hoists and when using Pecafil to form ground beams, separation panels, box outs, or pile caps and bases, you not only save time and waste less material but also take the hard work out of construction - significantly improving on site productivity.



Pecafil®: just look at its uses

L - shaped units are ideal for wide, shallow beams or rectangular bases.

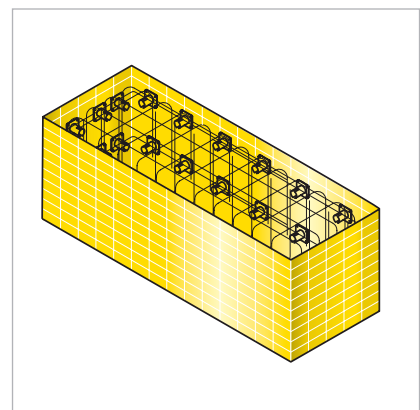
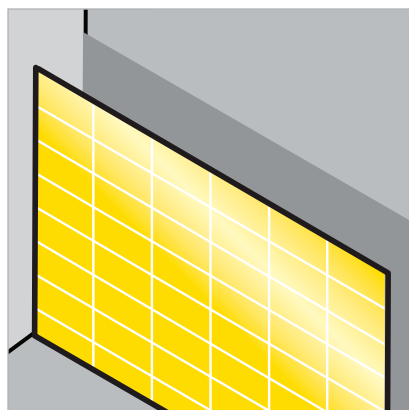
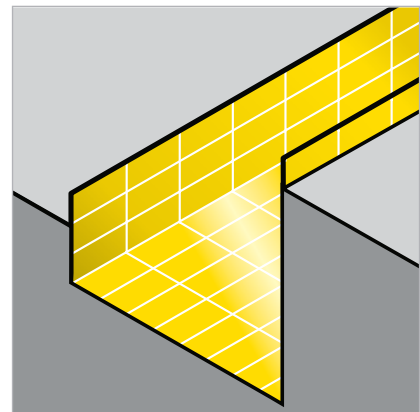
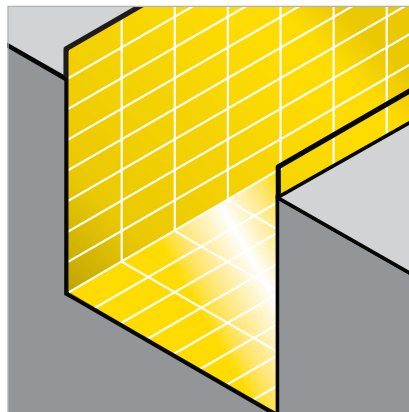
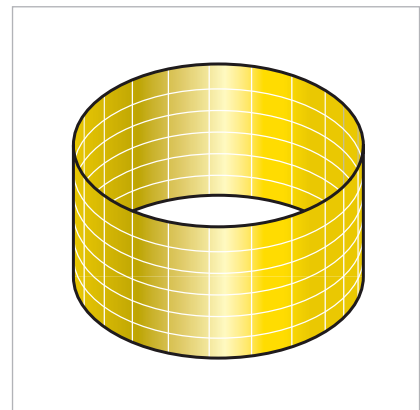
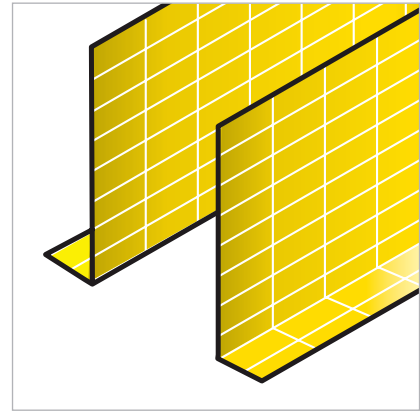
Circular formwork can be created to virtually any size with radiused units.

U - section ground beam units provide a fast and efficient way to construct beams in a clean lined excavation.

U - sections are also suitable to form the perimeter of semi-raft foundations and different side heights are also easily produced. Pecafil is the concrete-saving solution for semi-raft foundations in less stable ground conditions such as mining areas, flood plains, landfill sites or where peat or clay are present.

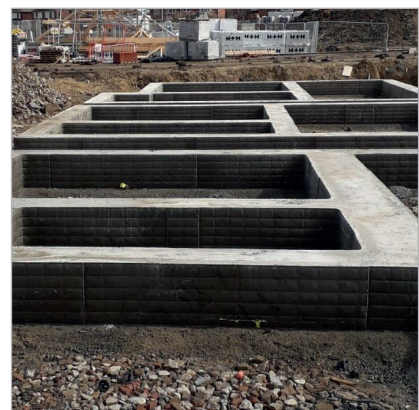
Factory cut and bent shapes can be formed to exact concrete outlines making Pecafil ideal to construct pile caps or bases – simply fix spacers to the reinforcement cage and position the Pecafil units.

Partition units can be used as a durable separation material between the concrete face and steel sheet piles or contiguous concrete piles, reducing concrete usage and eliminating spoil ingress/contamination to the reinforcement cage.

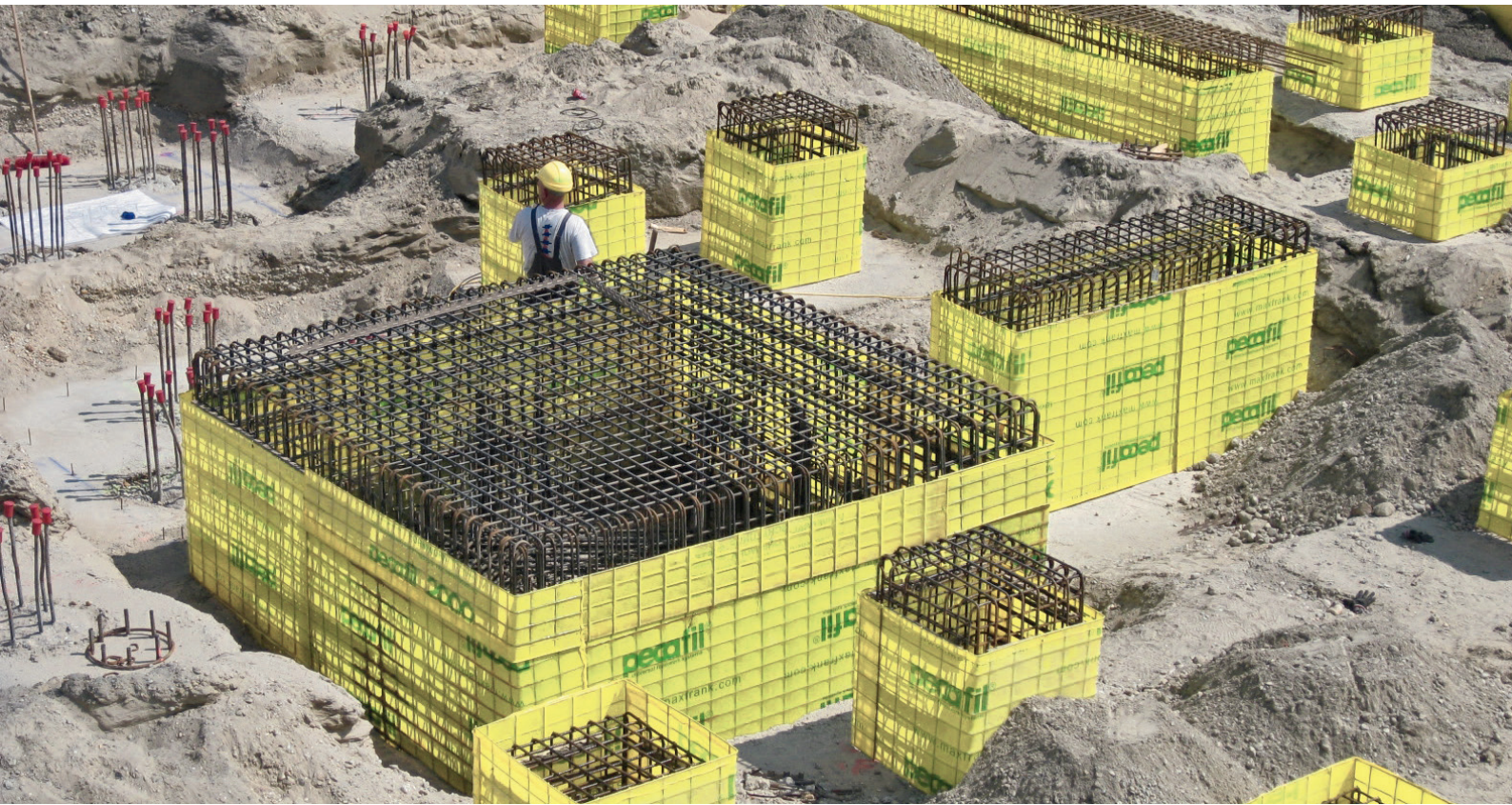


Pecafil®: the benefits

- Pecafil is a sealed edge strip permanent ‘in ground’ formwork solution that can be safely left in place without fear of contamination.
- No need to strip or clean formwork units for re-use or return.
- Pecafil is robust, fit for purpose, light to handle, fast and easy to install with basic tools.
- Wide range of standard and bespoke panels enable the formation of all foundation outlines.
- No release agent or any other preparation work is required for Pecafil.
- Factory formed shapes and panels are produced from site drawings, delivered direct to site and ready to use – each delivery comes with a detailed schedule of units to simplify the rapid installation process.
- Pecafil factory formed units can be rapidly assembled and installed.
- Pecafil U-section beam units can eliminate the concrete blinding operation and will help reduce over dig, saving time and removal of spoil to landfill.
- All Pecafil units can be quickly and easily bent on site if necessary, to accommodate variations to the foundation design, to form any pile cap, base, or ground beam profile.
- Curved or complex foundation shapes can easily be formed on site from standard flat strips, or by simple modifications to factory formed units already provided.
- Using Pecafil saves time and costs on blinding, labor and soil removal.
- Pecafil provides a clean, easily inspected, spoil-free section allowing rapid placement of concrete.
- With the use of ‘on ground’ construction accessories, lattice girders and distance spacers, using Pecafil allows some piled foundations to be constructed without backfilling.
- Backfilling with excavated material; Pecafil is the fastest and most cost-effective in-ground construction formwork solution. If ground conditions allow, sand blinding may not be required and Pecafil units may be placed directly on the exposed surface - an operation saved.



Pecafil®: sizes & dimensions



Pecafil offers a time-saving and cost-effective method when constructing reinforced concrete foundations compared to traditional erect, prop and strike shuttering methods.

Careful consideration should be given when selecting a permanent formwork system. As the original and reputable manufacturer of this permanent formwork system, MAX FRANK are always on-hand to advise you.

Pecafil panels are available in **standard lengths of 7 ft. 5 in.** with a selection of heights ranging from 18 in. to 108 in. (see the table on the right).

Height in.	
18	60
21	63
24	66
27	69
30	72
33	75
36	78
42	84
48	90
54	96
57	108

MAX FRANK Pecafil® detailing service



Manufactured to your project

To provide the ultimate in fast and accurate formwork, MAX FRANK provide a comprehensive Pecafil detailing service to match the supply of standard and custom manufactured elements to your exact requirements.

Based on your site drawings and discussions our technical team will produce a detailed Pecafil design scheme that will provide the optimum formwork solution for your project. This not only saves you money through reducing material waste on site but ensures that formwork is quick and easy to install.

MAX FRANK manufacture any shaped components upon order confirmation and supply both standard and shaped components direct to site. All units are individually marked and are supplied along with a fully detailed schedule of the units where necessary to simplify installation.

Call us to talk through your requirements.



MAX FRANK: We're here to help...

Service, delivery & installation

As your dedicated in-house contacts at MAX FRANK we are here to help you with any queries, ensure your orders are processed efficiently and delivered to meet your on-site timetables.

We are able to agree delivery schedules with you so that you know exactly when materials will be delivered to site. We will also discuss with you issues such as site access and any special off-loading requirements.

For customers using our detailing service, to produce formed components, we will consult with production to co-ordinate the delivery of your Pecafil order, to meet your on-site needs.



Scan the QR to view Pecafil® installation guidelines.

Email your quotation requests and drawings to:

USA: info-us@maxfrank.com

Canada: info@maxfrank.ca

Pecafil® formwork site installation guide – pile caps and bases: practical hints and tips

Pile cap or base assembly – step by step guide Fixing the pile caps and beams this way allows easy access to fix continuity bars through one side of the cap or base.

- Position the pile cap to the line and level.
- Fix spacers to establish and maintain specified concrete cover. Fix sufficient spacers to avoid soil infiltration when backfill is poured.
- Using the Pecafil® to be used, joint with the load, identify the correct units for the cap and base and place against the spacers.
- All Pecafil® units must be scheduled, for strength and rapid assembly.
- Use straight edge and marker allow side shoring 20mm over the beam units to create "tooth".
- Mark the beam outline on the side of the cap or base assembly, as shown ready to form openings for beams.
- Cut down corners line and across width front of beam, from the head. T-shaped "tooth" must be correct for Pecafil® beam units.
- Select perforated Pecafil® beam units and place inside the prepared beam space. The upper or lower forms is required.

Typical spacer arrangement – will vary by depth of cap/ base and ground conditions.
 Spacers should be installed as required to maintain specified concrete cover. Spacers to be staggered, as shown where practical.

Forming pile cap openings – for beam connections: allow 25mm to beam width.

- Use the straight edge to mark the beam outline on the side of the cap or base assembly. Use both edges to cut all areas of corners and base area of beams.
- All the beam sides, to form opening door rings, mark top wire intact, cut alternate horizontal wires on both side of beams with spacing down to the beam base and/or base cut for some depth cap/bases and beams.
- Fold or down connections doors as shown, to accept beam units.

Typical spacer arrangements
 Pecafil® recommended: Maximum Pecafil® spacer on two 500mm

Installation – PPE and tool

Pecafil® formwork site installation guide- beams in-ground: practical hints and tips

Recommended cap/base – beam connection

U" section beam unit installation - Recommended construction sequence for rc. ground beams

- Put level & 5mm across building sand.
- Place U" section in situ and level. Fix Pecafil® plastic side spacers to reinforcement cage across ground.
- Place top cap to given width. Fix Pecafil® plastic side spacers to reinforcement cage across ground.
- Check line and level of beams. Place loose backfill with 50mm of finished concrete base. Keep backfill and concrete well clear of foundations under construction.

Typical U" section beam spacer arrangement - Recommended spacers: MAX FRANK fibre concrete triangular bar spacers

Side strip beam installation - Recommended construction sequence for rc. ground beams

- Put trench and place concrete strip.
- Position fibre concrete triangular bar spacers.
- Fix beam side strip to line and level. Fix Pecafil® plastic side spacers to reinforcement cage along ground.
- Apply Pecafil® side strip to the given spacing. Place loose backfill with 50mm of finished concrete base. Keep backfill and concrete well clear of foundations under construction.

Typical side strip beam spacer arrangement - Pecafil® plastic side spacers

External corner, no pile
 External corner, no pile
 Typical beam intersection
 Typical beam overlap

MAX FRANK Group

Your Construction Partner

MAX FRANK are the leading supplier of innovative solutions to the construction industry, providing a wide range of products to suit different site and project requirements: The MAX FRANK Group also produce various specialist construction products ranging from formwork liners and reinforcement technologies to waterproofing solutions.

Ask your MAX FRANK Specialist for further details or visit www.maxfrank.com

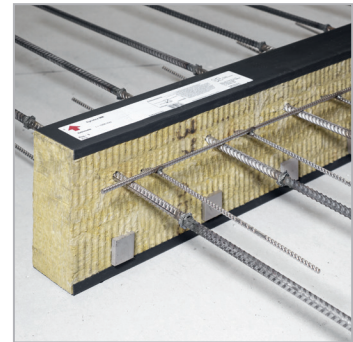
Stremaform® stay-in-place concrete jointing formwork

A self-supporting lost permanent formwork system designed to speed up the construction of concrete joints. Stremaform is at least 5 times faster and easier to install than traditional timber formwork.



Egcobox® thermal break solutions

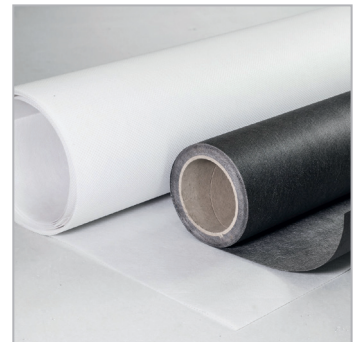
Insulated balcony connectors comprising A1 non-combustible mineral wool to REI 120. Advanced and user-friendly design software, alongside installation support, is available where required.



Zemdrain® CPF Liner

Applied to supporting formwork, the Controlled Permeability Formwork (CPF) liner drains the excess water from the concrete surface.

The result? A blowhole-free, harder and more resistant concrete surface.



Fradiflex® metal waterstop

The flexible special coating bonds with the concrete, effectively creating an adhesive barrier seal that prevents water from circulating. This system is used for the secure sealing of construction and pre-determined crack joints.

- Minimize risks during installation - safest waterstop on the market
- Eliminates welding at joints - labor time & cost-saving of up to 80%
- Extreme bonding to fresh concrete - no swelling



VISIT OUR WEBSITE: www.maxfrank.com

View the complete product range and download datasheets and installation guides. If you have questions - sample requests, prices or just to chat about how we might be able to help with your next project, email our team via and we will be happy to call you back.



INTEGRATED SOLUTIONS

Virtually all our products can be customised and yet retain the ability to be installed together – creating unique, integrated solutions that are designed to save you time and money during the construction process and, at the same time, increase the project's lifespan.



FULL COMPLIANCE ENSURED

MAX FRANK construction systems fulfil the highest industry standards – from industry approvals, Building Control & Warranty, to Fire Regulation compliance.



MAX FRANK

**BUILDING
COMMON GROUND**

MAX FRANK Group

Local branches:

Max Frank Inc.

USA

info-us@maxfrank.com

Max Frank (Canada) Inc.

Canada

info@maxfrank.ca

www.maxfrank.com